

coway

Coway Electronic Bidet User manual

BAS45-AEMY/ARMY
BAS46-AEMY/ARMY

MY

This appliance is not compatible with countries
that have different voltage standards.

For safe operation and optimal use, please read
the user manual carefully.

Dear Customers

Thank you for using our Coway Electronic Bidet.

Please read this user manual carefully for correct use and maintenance of the appliance.

You can refer to the user manual to troubleshoot for appliance issues while using it.

Electric Bidet

I. Before use

1. Safety Information	3
2. Parts Name	7
3. Installation	10
4. Checks before Use	13
5. Enhanced Hygiene Structure	14

II. How to Use

1. Buttons and Indicators	15
2. Special Mode	24
3. Self-Sterilization System	26
4. Automatic Cleansing System	27
5. How to Use	28

III. Maintenance

1. How to Clean Appliance	31
2. Filter Management	32

IV. Others

1. Correct Usage Guide	33
2. Troubleshooting	34
3. Specification	37
4. Warranty	39

Danger Death or serious injury may occur if the instruction is not followed.



Power

Electric shock/fire

- Do not use a damaged or loose outlet.
- Make sure to connect the power plug to a grounded 220 V - 240 V~ 50 Hz outlet.
- Do not pull on the power cord to move the appliance.
- Do not touch the power adapter with wet hands.
- Do not bend the power adapter excessively or avoid damage or deformation.
- Do not connect and disconnect the power adapter repeatedly.
- If water got into the power supply section, then disconnect the power adapter and completely dry it before use.
- Make sure the appliance is unplugged while the appliance is being repaired, inspected, or when its parts are being replaced.
- If there is any dust or water on the power plug's pins and contact area, wipe them off completely.
- Do not connect multiple appliances to one power outlet. Use a separate socket for the appliance.
- If you don't use it for a long time, then disconnect the power plug.
- Do not arbitrarily connect or modify the power plug.
- If the power plug is damaged, do not attempt to replace the adapter. Instead, contact Coway Careline to replace it.



Installation

Fire Electric shock/fire

- Do not install the appliance close to any heat sources.
- Do not store or use flammable gases or materials near the appliance.
- Do not install the appliance in a location that is too humid, dusty or exposed to water (rain) splashes.



Usage

Electric shock/fire

- If the appliance produces a strange noise, burning smell, or smoke, immediately unplug it from the electrical outlet and call the Coway Careline.
- Do not place bowl filled with water, chemicals, food, small metals, or flammable substances on top of the appliance.
- Do not place candles or cigarettes on top of the appliance.
- Do not use the appliance in a highly humid place or sprinkle water on the appliance.
- Do not use the appliance if it is not working properly. Unplug the power cord immediately, close the water supply valve, and contact Coway Careline.
- Do not push a metal wire or sharp object into a gap on the appliance or the warm wind discharge outlet.
- Do not block the warm wind discharge outlet with a hand.
- Close the water supply valve when replacing the filter.

Fire/burns Electric shock/ damage

Fire/ deformation

- Do not place the appliance near an electric heater or throw burning objects, such as a lit cigarette, into the toilet.



Others

Electric shock/ damage

Electric shock/fire

- Do not disassemble, repair, or modify the appliance.
- Do not detach the appliance from toilet seat.
- Kindly advise if users need to unplug the electric bidet before shower or cleaning bathroom.

Warning

Severe injury or property damage may occur.



Installation

Skin damage • Kindly confirm whether treated water may cause skin irritation or damage.



Usage



Others

Burns

- Children, elderly or disabled people, those unable to adjust the temperature, and those with sensitive skin should not use the appliance for more than 30 minutes with the warm temperature or seat temperature set to 'Low' or 'Off.' There is a risk of low temperature burn.
- * A low temperature burn refers to any injuries that occur when skin is in contact with heat of around 40°C for a prolonged time.
- * If the seat temperature is set to high for more than 45 minutes, the seat temperature is automatically lowered.

Damage/ malfunction Breakdown/ malfunction

- Do not sit or stand on the seat cover or put heavy objects on it.
- Do not use the control panel as a support or press it with excessive force.

Leakage/ malfunction

- Do not pull on the bidet nozzle or connecting nozzle excessively.

Others

- Make sure to unplug the power cord before cleaning the appliance. Do not sprinkle water on the appliance or use detergents that contain thinner, benzene, chemicals, hydrochloric acid, and vegetable oils.

Caution Minor injury or property damage may occur.



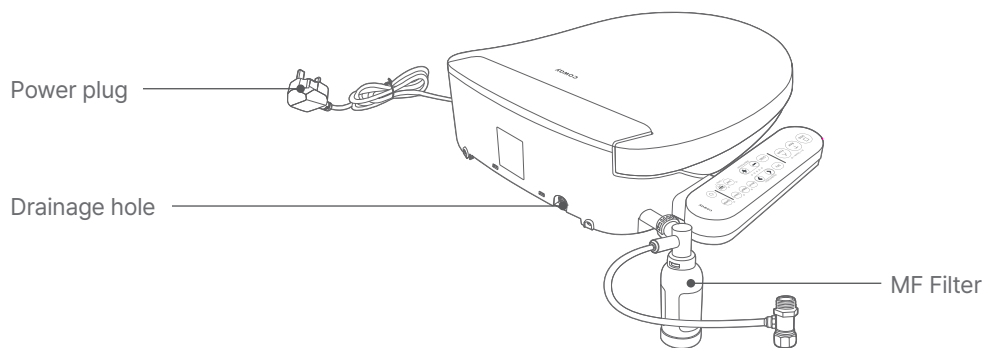
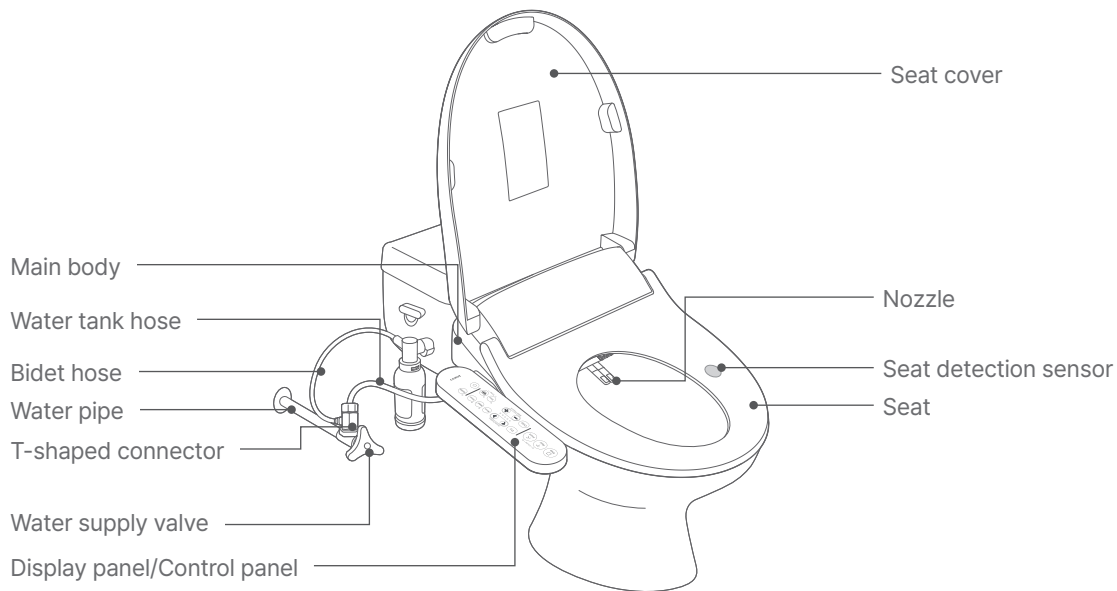
Installation

- Discoloration/bleaching**
- Do not use the appliance under direct sunlight.
 - Do not supply feed water to the warm water pipe.
- Failure**
- Make sure to inspect the water feed connection part after installation for any leakage.
 - Make sure to fix rubber packing on the T connection pipe.

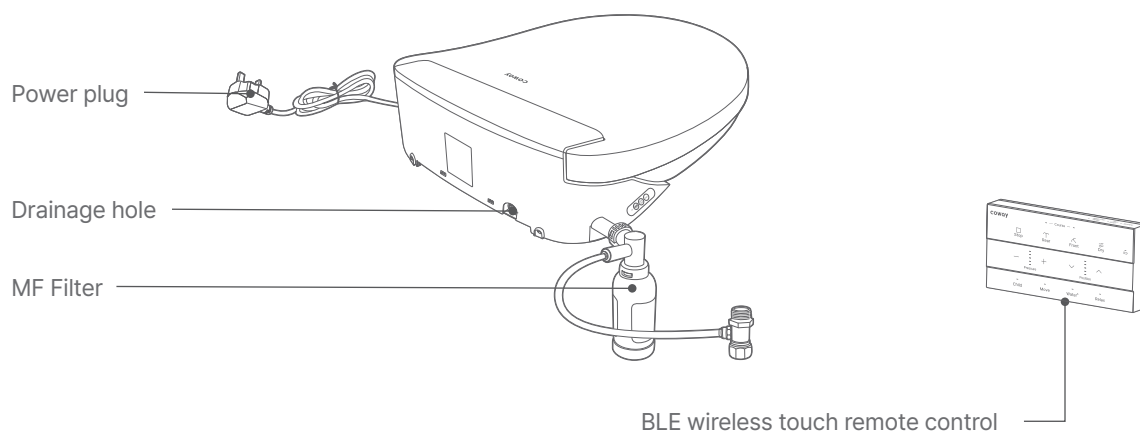
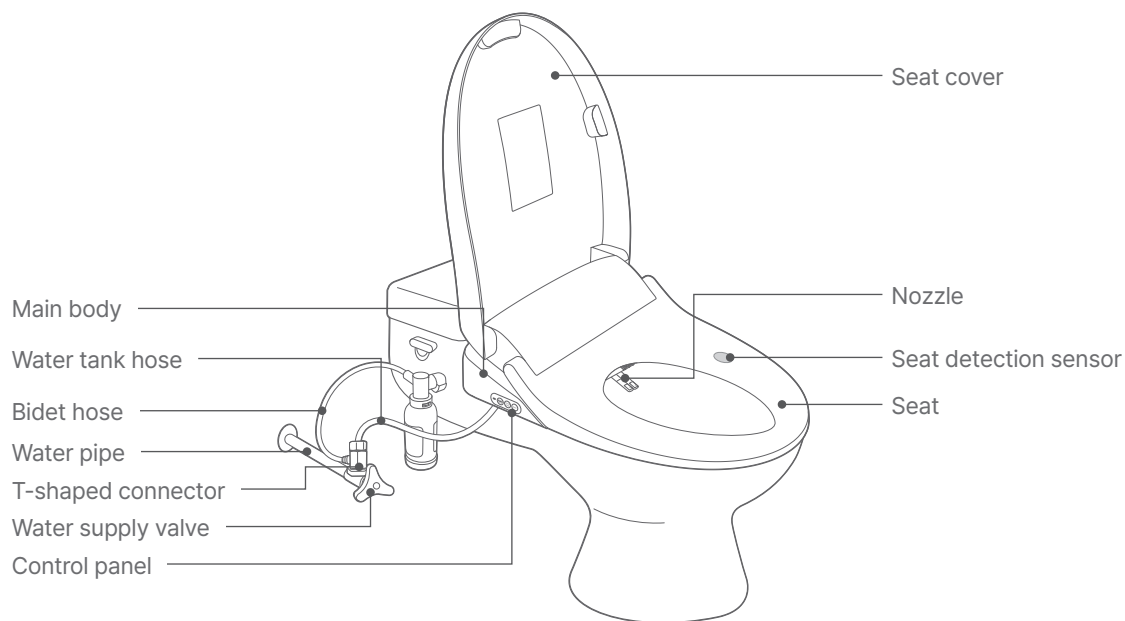


Usage

- Damage/malfunction**
- Do not open or close the seat cover with excessive force or lean on it.
- Injury/malfunction**
- This appliance is not intended for use by persons (including children) with reduced physical, sensory or mental capabilities, or lack of experience and knowledge, unless they have been given supervision or instruction concerning use of the appliance by a person responsible for their safety.
 - Children should be supervised to ensure that they do not play with the appliance.
 - Cleaning and user maintenance shall not be made by children without supervision.
 - This appliance can be used by children aged from 8 years and above.
 - Please keep the nozzle, warm air outlet, and appliance surface clean and free from any splashes.
- Odor/malfunction**
- If not using the appliance for an extended period of time, unplug the power cord, lock the water supply valve, and drain the water tank.
- Others**
- Make sure to use the new hose set provided with the appliance. Do not reuse an old hose set.

Front/Rear (BAS45-AEMY/ARMY)

Front/Rear (BAS46-AEMY/ARMY)



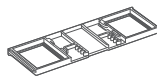
Installation parts



Bidet hose



1 filter clip



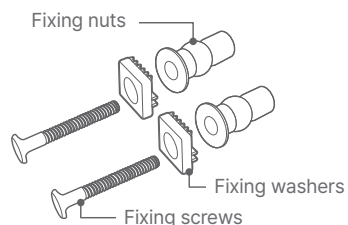
1 installation plate



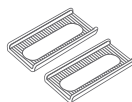
MF Filter



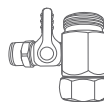
Filter fixing cap



2 sets of installation bolts



Fixer slides (2 EA)



Installation adapter



3 AAA batteries

Only for (BAS46-AEMY/ARMY)



- Tools for cleaning the appliance and filter replacement are not provided along with the appliance.
- Appliance servicing by specialists is provided to rental and membership customers.

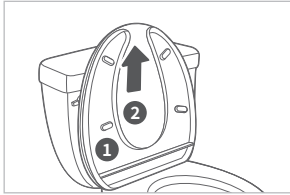
Check before installation

- Firmly tighten the fixing nuts so that the appliance is not loosened from the toilet.
- Install the bidet in a bathroom location where it is not directly exposed to water splashes and sunlight.
- Make sure to connect the bidet to a cold water pipe.
(Connecting the part to a warm water pipe may damage the filter or the hose.)



- Consult with a Coway technician for the detailed installation method to ensure optimal performance of the appliance. Coway Careline: 1-800-888-111

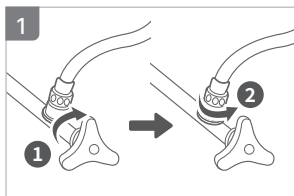
Remove the existing seat



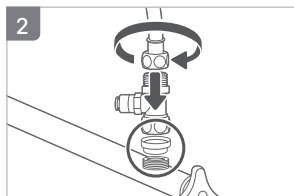
How to remove the existing seat

- Loosen the fixing nuts for the seat to remove the existing seat ① and the seat cover ②.
- Store the removed seat and cover away from direct sunlight.

How to install the bidet

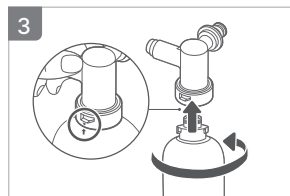


After locking the water supply valve ①, separate the existing water tank hose ②.



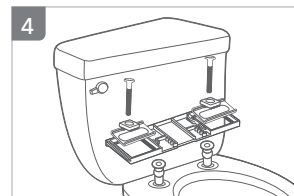
Connect the rubber packing, T-connector, and water tank hose to the existing water supply pipe in order to connect the bidet hose to the T-connector.

- Insert a rubber packing between the water pipe and the T-connector.
- Tighten the nuts connecting the top and bottom of the T-connector securely to the end.



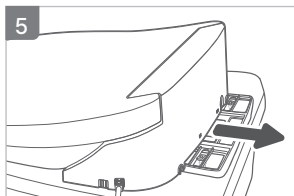
Assemble the MF filter on to the filter locking cap.

- Be careful, as the bidet may not function properly if the filter is loosely assembled.



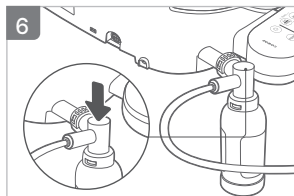
Insert only the fixing nut into the toilet seat mounting hole after removing the installation bolts. Place the installation plate on top of the fixing nut and assemble the fixer slides, fixing washer and fixing screw using a screwdriver.

- Assemble in the following order: fixing nut > installation plate > fixer slides > fixing washer > fixing screw. Make sure that the fixing washer and fixing screw do not protrude above the installation plate.



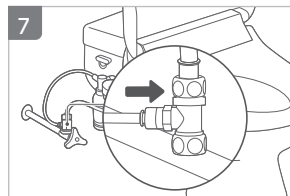
Align the rear of the main body with the installation plate and push it in while pressing the button until a "click" sound is heard.

- After checking if the bidet main unit shakes left or right, if it moves, tighten the fixing nut again.
- The position can be adjusted in four steps by pressing the button.



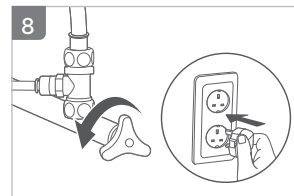
Connect the filter to the rear of the appliance and secure it using the filter clip.

- Ensure that the filter clip is properly inserted. If the raw water supply valve is opened while the filter clip is loosely inserted, the filter locking cap may detach, causing water to spray and posing a risk of injury.



Connect the bidet hose to the filter locking cap and the T-connector.

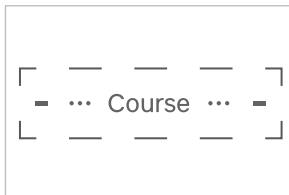
- Keep the bidet hose as short as possible. A long bidet hose may cause noise.



Connect the power plug after turning on the raw water supply valve.

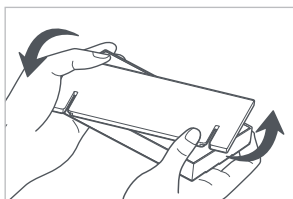
- Be sure to connect it to a grounded outlet. Grounding reduces electrical damage caused by a short circuit.
- If an extension cord must be used, ensure it is a rated extension cord of at least 240V, 16A with a grounding terminal.

How to connect the remote control



- Open the toilet seat cover and bring the remote control with the batteries inserted close to the top of the appliance as shown in the image.
- When the bidet and remote control are successfully connected, the mode indicator will turn on for 1 second.
- If the bidet and remote control fail to connect, the mode indicator will turn on for 3 seconds.
If the connection fails, press any button on the remote control and repeat the above steps.

How to replace the battery



Turn the battery cover on the rear of the remote control in the direction of the arrow shown in the image to remove it, and then replace the batteries (1.5V AAA, 3 pieces).

After correctly assembling the red rubber ring in its original position, secure the battery cover as shown in the image and turn it clockwise to fully lock it.

* Do not replace the battery with wet hands or in a humid environment. It may cause malfunction.

This appliance is for 220 V - 240 V~ 50 Hz.

Always plug the power cord into a grounded 220V - 240V/50Hz outlet.

The bidet requires a power supply to operate.

Open the tap water supply valve.

The bidet requires water supply to operate normally.

After installing the appliance, remove the protection films on the main body and control panel before use.

Check the remote control status before use.

The remote controller will not function if the connection setting (pairing) is not completed or if the bidet is powered off.

If the bidet does not respond to remote commands, ensure the main unit is powered on and re-establish the remote controller pairing. When the battery is low, pressing a button will cause the battery replacement indicator to blink. If the battery is fully discharged, the remote controller will turn off.

- How to replace the battery: Turn the battery cover on the rear of the remote control counterclockwise to remove it, then replace the batteries (1.5V AAA, 3 pieces). Assemble the red rubber ring correctly in its original position. Align the battery cover with the indicator line and fully tighten it.
- Batteries are not covered under the service warranty. Please replace them as needed.

Replace the filter regularly.

Periodic replacement of the filter is critical in ensuring hygienic cleansing.

Using an expired filter may reduce its performance, and unfiltered cleansing water may be sprayed.

Do not miss the filter replacement cycle.

- Filter replacement cycle: 4 months

ECO GREEN system

- The "hybrid instantaneous warm water" system sets adequate temperatures quickly during use (when seated). The power saving system switches the bidet seat to the non-heating mode when not in use to save the electric power and lower the electric rates.
- While the power-saving function is OFF, the system maintains water in the warm water tank at a constant temperature. (it can be reset through a special mode.)

When not in use for a long time, clean it before use.

If the appliance has not been used for a long time, replace the filter and clean the nozzles, seat, and other parts according to the specified methods.

After installing the appliance, check for leakage.

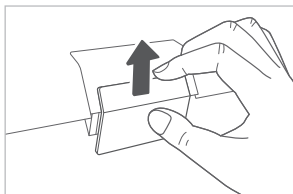
Check there are no leakages between the tap water supply valve and hose.

There must be a rubber washer between the T-shaped connector and the tap water supply valve.

Use a soft, dry cloth to wipe the bidet and the controller after a shower or cleaning the bathroom.

Easy-to-Clean Nozzle Duct and Drying Duct

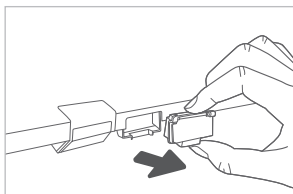
The appliance is designed with detachable nozzle duct and drying duct, allowing for easy cleaning and improved hygiene. This feature ensures a more sanitary experience by preventing buildup and maintaining cleanliness with minimal effort.



How to detach the nozzle duct

Detach the nozzle duct by pushing both sides upward from the bottom as shown in the picture.

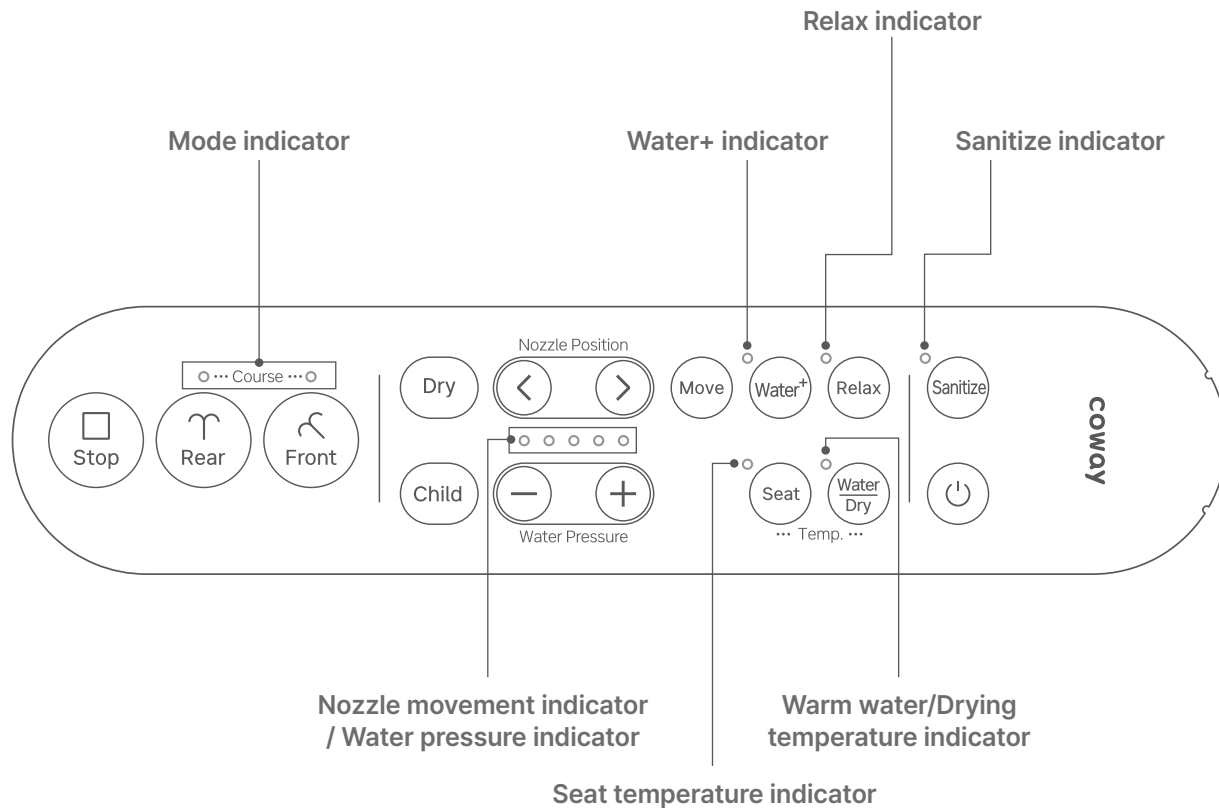
- Be careful not to let the duct fall into the toilet when detaching.



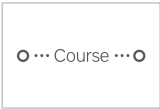
How to detach the drying duct

Hold the bottom part of the drying duct and pull in the direction of the arrow to detach it.

Display indicator (BAS45-AEMY/ARMY)



Status notification icon (BAS45-AEMY/ARMY)



Mode indicator
Appears when selecting a mode.



Relax indicator
Appears when selecting the Relax function.

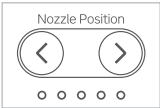


Water+ indicator
Appears when selecting the water+ function.

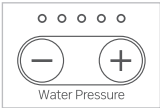


Sterilization indicator

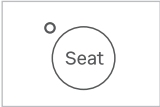
- During the sanitize process: Sanitization in progress
- When sanitize is complete: Sanitization complete
- When the function is in use: Function not in use



Nozzle movement indicator
Nozzle movement adjusts gradually from Level 1 to Level 5 each time the button is pressed.



Water pressure indicator
Water pressure adjusts gradually from Level 1 to Level 5 each time the button is pressed.

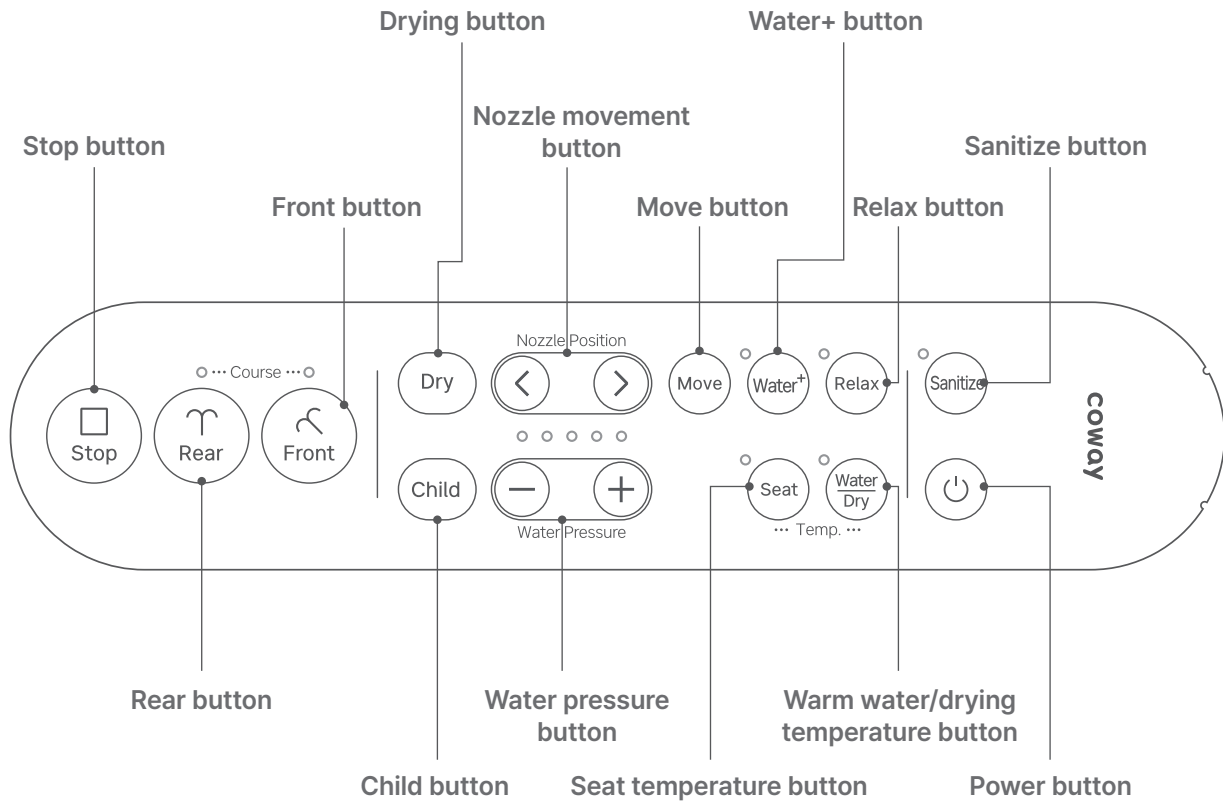


Seat temperature indicator
Appears when adjusting the seat temperature.
Off (heater off), Green (low), Orange (medium), Red (high)



Warm water/Drying temperature indicator
Displayed when adjusting the warm water or drying temperature.
Off (heater off), Green (low), Orange (medium), Red (high)

Buttons (BAS45-AEMY/ARMY)



Main functions (BAS45-AEMY/ARMY)



Stop button

Press to stop all functions that are currently in operation.



Front button

Press to use front cleansing function (bidet).



Child button

Press to activate the child function.



Water pressure button

Press to adjust the water pressure.



Seat temperature button

Press to adjust the temperature of the seat.



Relax button

The Relax function softens the water flow strength, providing a gentler cleansing. Press to activate the relax function.



Sanitize button

Press to activate the sterilization function.

- When using the sanitize function, make sure to close the toilet seat lid to prevent the sterilizing water from splashing or spraying outside.
- This function only operates when not sitting on the bidet. If you press the sanitize button while seated, the sterilization function will be scheduled and will start when you stand up.



Rear button

Press to activate the rear cleansing function.



Drying button

Press to activate the drying function.

- After using Cleansing or Front Cleansing, the bidet will dry the area with warm air.



Nozzle movement button

Press when you want to adjust the nozzle position during the cleansing/ front cleansing function.



Move button

Press when you want to activate the nozzle movement feature.



Water+ button

Water+ is a function for stronger water flow than the basic cleansing. Press the button when you want to use the Water+ function.



Warm water/drying temperature button

Press when you want to adjust the warm water or drying temperature.

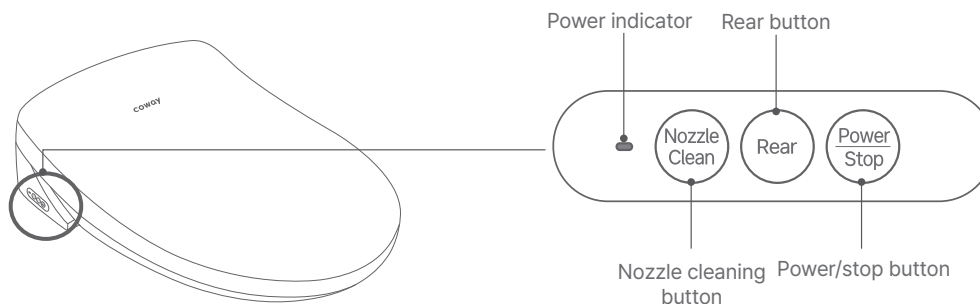


Power button

Press to turn the appliance on or off.

- When the function is operating, press the power button to stop the function and switch to standby mode. Press and hold the power button for about 3 seconds to turn off the appliance.

Main body display and buttons (BAS46-AEMY/ARMY)



Status notification icon



Power indicator

Power ON: Light green

Main function



Nozzle cleaning button

Press to clean the nozzle.
Press this button to spray cleaning water onto the nozzle, and the nozzle will extend forward and stop, making it easier to clean.



Power/stop button

Press this button when you want to turn on the appliance or stop the function.

- When the function is operating, press the power button to stop the function and switch to standby mode. Press and hold the power button for about 3 seconds to turn off the appliance.

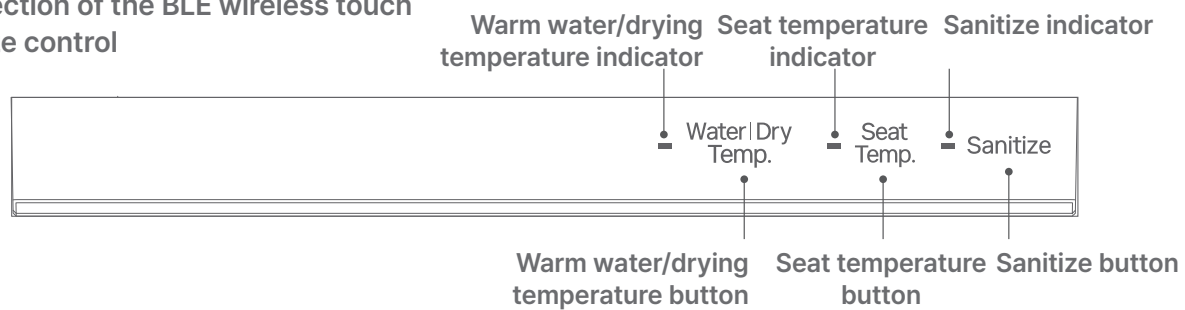


Rear button

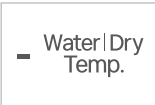
Press to activate the rear cleansing function.

Remote Control Buttons (BAS46-AEMY/ARMY)

Top section of the BLE wireless touch remote control



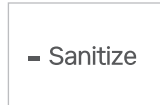
Status notification icon



Warm water/drying temperature indicator

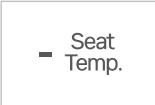
Displayed when adjusting the warm water or drying temperature.

- Off (heater off), Green (low), Orange (medium), Red (high)



Sanitize indicator

- During the sanitize process: Sanitization in progress
- When sanitize is complete: Sanitization complete
- When the function is in use: Function not in use

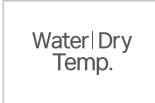


Seat temperature indicator

Displayed when adjusting the temperature.

- Off (heater off), Green (low), Orange (medium), Red (high)

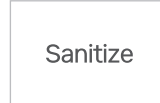
Main function



Warm water/drying temperature button

Press when you want to adjust the warm water or drying temperature.

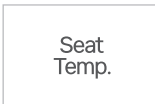
- When drying is not in operation: Set the warm water temperature
- When drying is in operation: Set the drying temperature



Sanitize button

Press to activate the sanitize function.

- When using the sanitize function, make sure to close the toilet seat lid to prevent the sterilizing water from splashing or spraying outside.
- This function only operates when not sitting on the bidet. If you press the sanitize button while seated, the sterilization function will be scheduled and will start when you stand up.

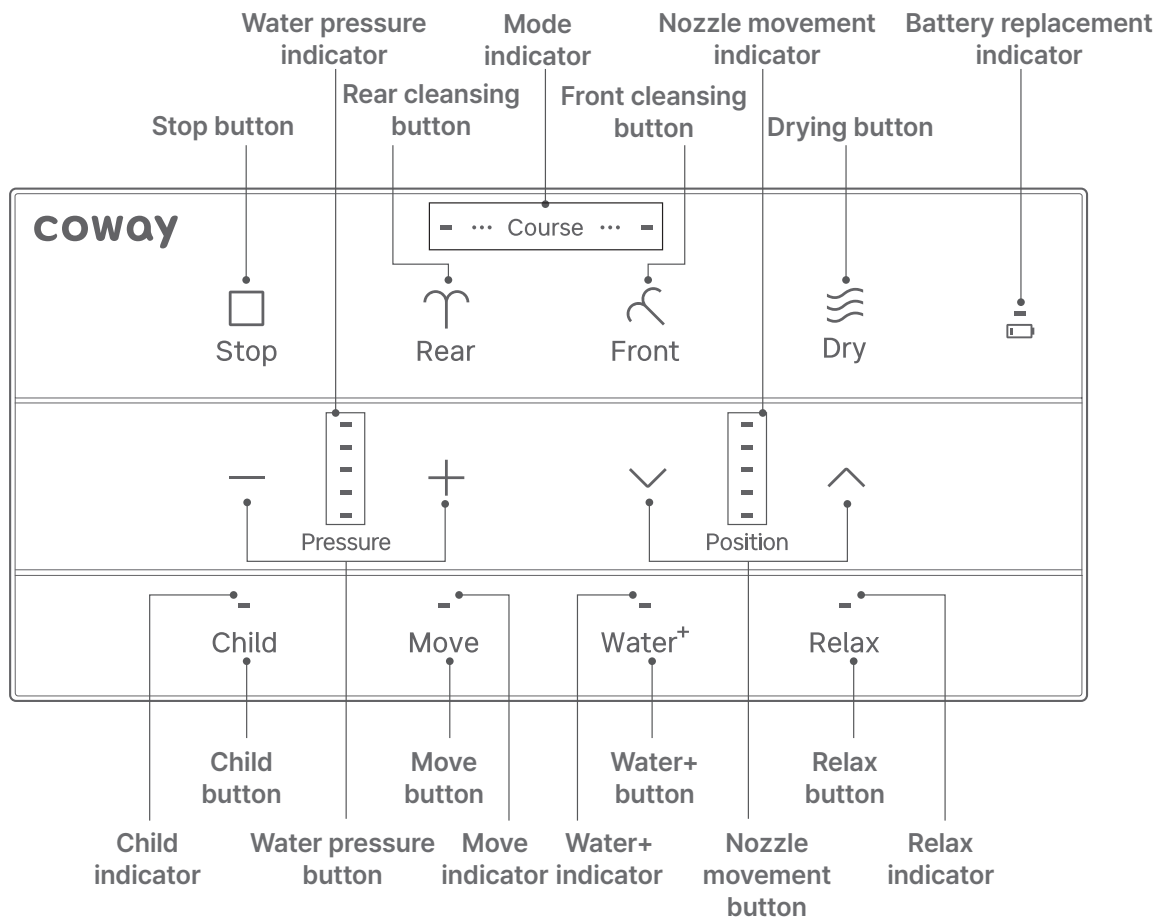


Seat temperature button

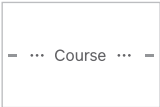
Press to adjust the temperature of the seat.

Remote Control Buttons (BAS46-AEMY/ARMY)

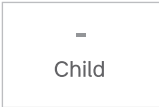
Front section of the BLE wireless touch remote control



Status notification icons (BAS46-AEMY/ARMY)



Mode indicator
Appears when selecting a mode.

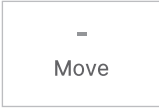


Child indicator
The indicator activate when the Child function is selected.



Battery replacement indicator
Indicates when the remote control batteries need to be replaced.

- When it's time to replace the batteries, the indicator will turn on when a button is pressed.

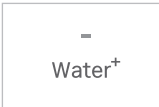


Move indicator
The indicator activate when the Move function is selected.



Water pressure indicator

- Each time the '+' or '-' water pressure button is pressed, the indicator changes through Levels 1 to 5.

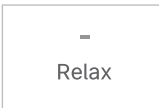


Water+ indicator
The indicator activate when the Water+ function is selected.



Nozzle movement indicator

- Each time the 'V' or '^' up/down button is pressed, the indicator changes through Levels 1 to 5.



Relax indicator
The indicator activate when the Relax function is selected.

Main functions (BAS46-AEMY/ARMY)



Stop

Stop button

Press to stop all functions that are currently in operation.

Child

Child button

Press to activate the child function.



Rear

Rear cleansing button

Press to activate the rear cleansing function.

Move

Move button

Press when you want to activate the nozzle movement feature.



Front

Front cleansing button

Press to activate front cleansing function (bidet).

Water⁺

Water+ button

Water+ is a function for stronger water flow than the basic cleansing. Press the button when you want stronger and cleaner cleansing.



Dry

Drying button

Press to activate the drying function.

- After using cleansing/front cleansing, the water will be dried.

Relax

Relax button

The Relax function softens the water flow strength, providing a gentler cleansing. Press to activate the relax function.

Pressure

Water pressure button

Press to adjust the water pressure.

- Use the + and - buttons to adjust the water pressure level as desired.

Position

Position button

Press when you want to adjust the nozzle position during the cleansing/front cleansing function.

- Use the ∨ and ∧ up/down buttons to adjust to the desired position.

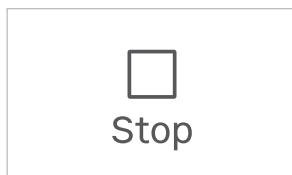
How to set Special Mode



Press and hold the Stop and Rear Cleansing buttons simultaneously for about 3 seconds to enter Special Mode.

- The Water pressure indicator and Water+ indicator will blink to show the current setting.
- The Special Mode will automatically deactivate if no button is pressed for 10 seconds.
- While in Special Mode, you can adjust six different settings by pressing the corresponding buttons.

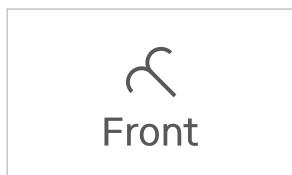
Once entering Special Mode



Sound mode

After entering Special Mode, press the stop button on the control panel to select the desired setting. When Sound mode is disabled, button touch sounds will be muted.

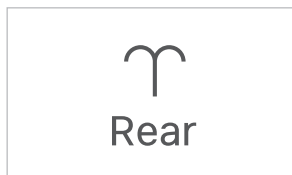
- When the mode is enabled: The water pressure indicator Level 1 LED will blink.
- When the mode is disabled: The water pressure indicator Level 1 LED will turn off.



Seat detection mode

After entering Special Mode, press the front cleansing button on the control panel to select the desired setting. When seating detection mode is enabled, functions will operate only when seating is detected.

- When the mode is enabled: The water pressure indicator Level 2 LED will blink.
- When the mode is disabled: The water pressure indicator Level 2 LED will turn off.

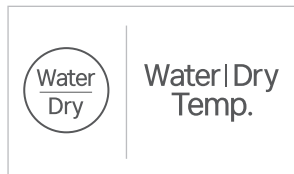


Auto drain mode

After entering Special Mode, press the rear cleansing button on the control panel to select the desired setting. When automatic drain mode is enabled, the warm water tank will automatically drain when not in use.

- When the mode is enabled: The water pressure indicator Level 3 LED will blink.
- When the mode is disabled: The water pressure indicator Level 3 LED will turn off.
- Auto Drain mode is disabled by default when the appliance is purchased.

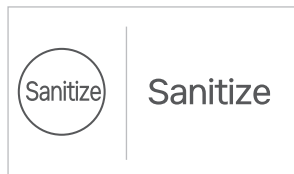
How to set Special Mode



Power-saving mode

After entering Special Mode, press the water/dry button to select the desired setting. (For remote control type, the water/drying button is located at the top of the remote control.) When the appliance is not in use, it switches to standby mode to reduce electricity consumption.

- When the mode is enabled: The water pressure indicator Level 4 LED will blink.
- When the mode is disabled: The water pressure indicator Level 4 LED will turn off.



Pre-Sanitize mode

After entering Special Mode, press the sanitize button to select the desired setting. (For remote control type, the sanitize button is located at the top of the remote control.) When seated, a fine mist is sprayed onto the toilet bowl to assist with cleaning.

- When the mode is enabled: The water pressure indicator Level 5 LED will blink.
- When the mode is disabled: The water pressure indicator Level 5 LED will turn off.
- Pre-Sanitize mode is enabled by default, when the appliance is purchased.



Pump low noise mode

After entering Special Mode, press the water+ button to select the desired setting. Reduces operating noise by limiting the maximum output of the pump. Pump output may drop when set.

- When the mode is enabled: The Water+ indicator LED will blink.
- When the mode is disabled: The Water+ indicator LED will turn off.
- When purchasing the appliance, the pump low noise mode is disabled.

3

Self-Sterilization System

What is the Self-Sterilization system?

The Self-sterilization System operates in two modes - Automatic and Manual - to maintain hygiene by keeping the bidet's interior and exterior clean through a three-step sterilization process (Water Path → Nozzle → Toilet).

1. Automatic Sterilization

- Runs once per day to ensure continuous cleanliness.
- If 36 hours have passed since the last sterilization (based on 12 uses per day), it will activate after the next cleansing/bidet use.

2. Manual Sterilization

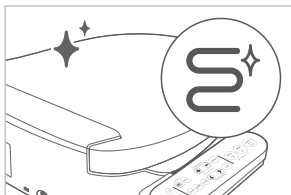
- Activate by pressing the Sanitise button.
- The sterilization process lasts about 90 seconds in the order of Water Path → Nozzle → Toilet.
- Recommended usage: Up to twice a day.

Key Features

- Electrolysed Water: Generated by electrically decomposing tap water without additives to eliminate major bathroom germs.
- LED Indicators:
 - During Sterilization: Sanitise LED blinks, Toilet Bowl LED turns on.
 - After Sterilization: Sanitise LED stays on, Toilet Bowl LED turns off.
 - When in Use: Sanitise LED turns off.

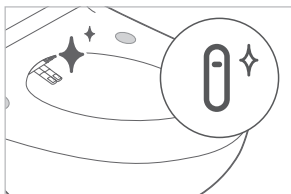
* Note: Sterilized water may not be generated if the water supply quality is poor (e.g., underground water).

* Tip: Close the seat cover during sterilization to prevent splashing.



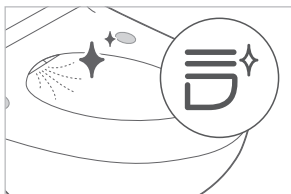
Flow path self-sterilization

Every internal water path inside the bidet is sterilized, preventing internal contamination and ensuring clean water flow.



Nozzle self-sterilization

Since the nozzles are exposed to external contaminants, sterilization water is automatically sprayed to eliminate germs. The nozzle also undergoes self-cleaning after every use and during the self-sterilization cycle.



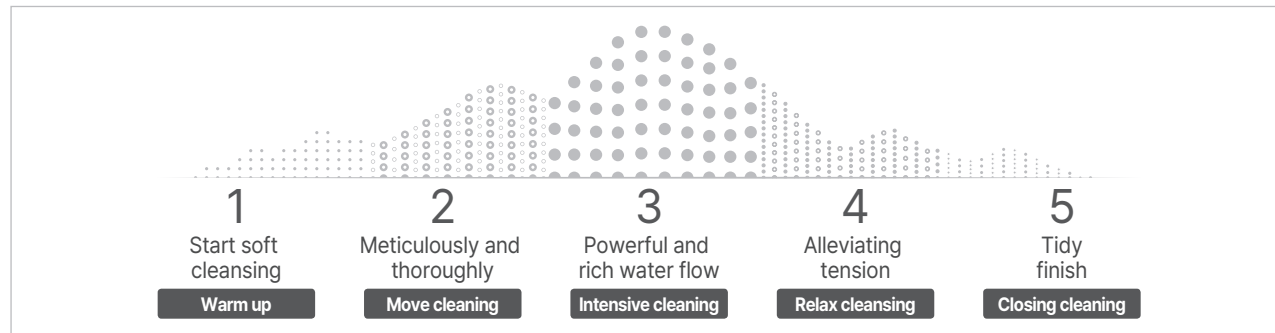
Toilet Bowl self-sterilization

Sterilization water is evenly sprayed onto the inner toilet bowl to prevent internal contamination.

What is the automatic cleansing system?

Provides a customized water flow program based on the user's condition, enabling more thorough and healthy care.

This is Coway's unique revolutionary water flow technology that analyzes water flow scientifically for the five-step course.



Optimized water stream solution that combines various elements

Water pressure	Flow control	Cleansing type	Time
Water pressure 1	Water+ Relax	Rear cleansing	Time
Water pressure 2		Front cleansing	
Water pressure 3		Move	
Water pressure 4			
Water pressure 5			

Customized water flow mode based on user condition & preference

General mode A manual water flow where users can add/remove additional functions as needed		Cleansing (120")	Water pressure			Relax		Water+			
			Pressure Level: 1-5			On/Off		On/Off			
i-wave technology Coway exclusive water flow system	Automatic mode Preset water flow system optimized for cleansing/front cleansing	Rear cleansing (120")	Warming up 3"	Move clean 22"		Intensive cleansing 75"		Massage 15"		Closing 5"	
			Water pressure 3	Water pressure 3	Move	Water pressure 4	Water+	Water pressure 4	Relax	Water pressure 3	
		Front cleansing (120")	Warming up 3"	Pre-wash 10"		Intensive cleansing 102"					Closing 5"
			Water pressure 2	Water pressure 3		Water pressure 3		Water+		Water pressure 2	

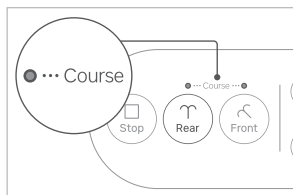
Basic operation guide for rear cleansing

- Press the nozzle movement button (◀ ▶) to adjust the nozzle position.
- During its use, it is possible to adjust the warm water temperature, the water pressure and the nozzle position according to the body type and preference.
- When the nozzle returns to the position after rear cleansing, it is cleaned automatically for about 6.5 seconds.

How to change the Rear cleansing water flow mode

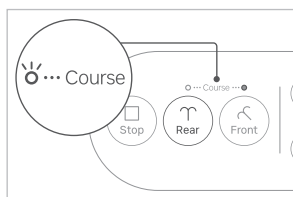
- While seated on the bidet seat, press the 'Rear' cleansing button on the control panel.
- The current mode status is indicated by the LED.
- To change the mode, press the 'Rear' cleansing button again to switch to General mode → Automatic mode.
- Before the cleansing water is sprayed, the cleansing nozzle removes cold water so that 'Rear' cleansing is done at the set warm water temperature.

Rear cleansing



[General mode]

- Adjust water flow manually by adding or removing functions.
- Press 'Rear' while seated to activate General Mode.
- Once the General Mode is set, the LED of Course indicator on the left will be turned off.



[Automatic mode]

- This is a preset water flow for optimised cleansing.
- Press 'Rear' button while seated to activate Automatic Mode.
- Once the Automatic Mode is set, the LED of Course indicator on the left will be turned on.

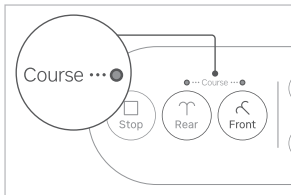
Basic operation guide for front cleansing

- Press the Nozzle movement button (◀ ▶) to adjust the nozzle position.
- During its use, it is possible to adjust the warm water temperature, the water pressure and the nozzle position according to the body type and preference.
- When the nozzle returns to the position after front cleansing, it is cleansed automatically for about 6.5 seconds.

How to change the Front cleansing water flow mode

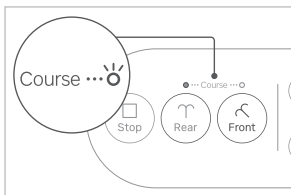
- While seated on the bidet seat, press the 'Front' Cleansing button on the control panel.
The current mode status is indicated by the LED.
- To change the mode, press the 'Front' Cleansing button again to switch to General mode → Automatic mode.
- Before the cleansing water is sprayed, the front cleansing nozzle removes cold water so that 'Front' cleansing is done at the set warm water temperature.

Front cleansing



[General mode]

- Adjust water flow manually by adding or removing functions.
- Press 'Front' while seated to activate General Mode.
- Once the General Mode is set, the LED of Course indicator on the right will be turned off.



[Automatic mode]

- This is a preset water flow for optimised cleansing.
- Press 'Front' button while seated to activate Automatic Mode.
- Once the Automatic Mode is set, the LED of Course indicator on the right will be turned on.

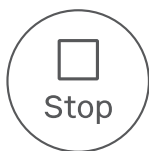
Additional Functions



Dry

Press the "Drying" button to start the drying function, which releases warm air for about 2 minutes.

- For faster drying, lightly wipe off excess moisture beforehand.
- You can adjust the drying temperature using the "Warm Water/Drying Temperature" button.
- If you press the "Drying" button during cleansing, the cleansing function will stop immediately, and drying will begin.



Stop

Press the "Stop" button on the control panel to immediately stop all ongoing operations.

- The drying function will stop about 2 seconds after pressing the "Stop" button.



Child Mode

Child Mode is specially designed for children, providing a gentle and comfortable cleansing experience. It optimizes the nozzle position and operates at the lowest water pressure to suit delicate skin.

- When activated, the bidet runs a 1-minute cleansing cycle followed by 2 minutes of drying, even if the seat sensor does not detect a user.
- During operation, users can adjust the nozzle movement, water pressure, seat temperature, and water/drying temperature as needed.
- Pressing the Child Mode button again during cleansing or drying will extend the corresponding function.

Nozzle



- For BAS45

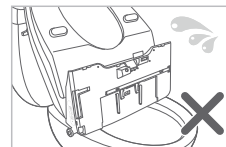
Press and hold the "Power" button for at least 3 seconds to turn off the bidet, then press the "Sanitize" button on the control panel to start cleaning.

- For BAS46

Press the "Nozzle cleaning" button on the main body to start cleaning.

- The cleansing nozzle will extend forward, and cleaning water will be sprayed for cleaning.
- After the cleansing nozzle is cleaned, the bidet nozzle will extend forward, and cleaning water will be sprayed for cleaning.

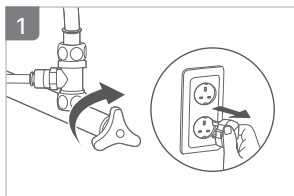
Main body



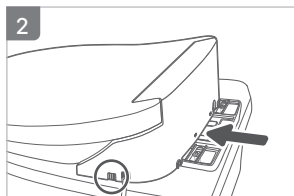
Method: Clean with a soft sponge or cloth using a neutral detergent.

- Do not use thinners, benzene, abrasive cleaners, chemical agents, hydrochloric acid-based cleaners, plant-based oils (grease), or rough scrubbers.
- After separating the nozzle and drying duct, unplug the power plug before cleaning the main body of the product.
- Do not spray water directly on the main body of the appliance. Especially, if the bottom of the appliance is cleaned in an upright position, it may cause malfunction.
- Gently hold the nozzle without applying excessive force.

How to disassemble the appliance



Unplug the power cord, and then close the water supply valve.



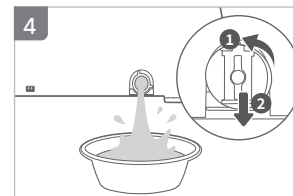
Pressing the button on the lower right area of the appliance, hold both sides of the appliance and pull it forward to separate it from the fixing plate.

- When disassembling the appliance, make sure to unplug the power cord and disconnect the bidet hose.



Place a large container (at least 1L) under the drain outlet at the bottom of the appliance.

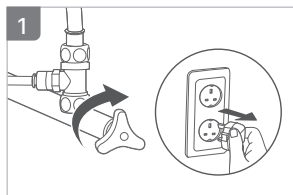
- The packing cap drain must be removed before draining the product.



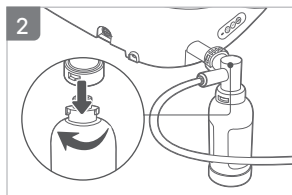
Turn the drain plug 90° counterclockwise and pulling it out.

- Opening the drain outlet to drain the water inside the tank completely.
- The packing cap drain must be mounted again after draining.

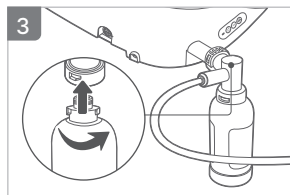
How to replace the filter



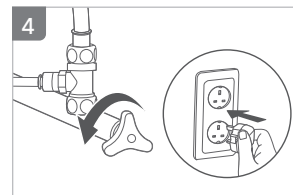
Unplug the power cord, and then close the water supply valve.



Turn the used MF Filter in the direction of the arrow to detach it from the filter locking cap.



Insert the new MF Filter into the filter locking cap by turning it in the direction of the arrow.



Open the raw water supply valve and plugging in the power cord.

Daily inspection

For safe use, regularly check the condition of your bidet.

Power

- Is the indicator turning 'on' and 'off' as you move the plug when power is connected?
- Is a part of the power plug hotter than usual?
- Is a part of the power cord disfigured, discolored, or damaged?
→ If the above problem occurs, stop using it immediately and contact Coway Careline (1-800-888-111).

Display

- Is the appliance's display blinking?
→ If abnormal blinking occurs, contact Coway Careline (1-800-888-111) immediately.

Sound

- Is the appliance making abnormal sounds?
→ If abnormal sounds are heard, contact Coway Careline (1-800-888-111) immediately.

The bidet may operate abnormally due to minor causes because the user is unfamiliar with using the appliance. Check the following or contact Coway Careline if the problem persists.

The appliance is not working.

Power plug	Ensure that the power cord is connected to a 220V–240V/50Hz outlet.
Power failure	Check if the power supply is off.
Power	Check if the power of the control panel is turned off. See if the buttons other than the power button work normally. If another button is pressed, it is not powered up.
Lock mode	The seat sensor lock mode is enabled by default, and the buttons do not work unless the seat is occupied.

There is no water flow.

Water supply valve	Check if the water supply valve is locked.
Nozzle	Check if the nozzle is clogged with foreign matters. Brush the nozzle hole with a toothbrush and get rid of foreign matters.
Water supply cut off/Water tank	If there is no water flow immediately after installation, please check if water supply is cut off. (After installation, it takes about 1–2 minutes for the water tank to fill before water is sprayed from the nozzle.)

The water flow is too weak.

Water pressure	Check if the water pressure is set too low. Adjust the water pressure accordingly.
Nozzle	Check if the nozzle is clogged with foreign matters. Brush the nozzle hole with a toothbrush and get rid of foreign matters.
Filter	The filter may be clogged with foreign substances. Check the filter replacement cycle and replace the filter accordingly.

The bidet may operate abnormally due to minor causes because the user is unfamiliar with using the appliance. Check the following or contact Coway Careline if the problem persists.

The seat or cleansing water is not warm.

Temperature button	Check if the seat/warm water temperature buttons are set to 'off'. Press the seat/warm water temperature button to adjust to a comfortable temperature.
---------------------------	------------------------------------------------------------------------------------------------------------------------------------------------------------

Drying air is cold.

Drying temperature adjustment is set to 'off'.	Check if the drying temperature indicator is off. If so, turn on the function by pressing the button to adjust to a comfortable temperature.
-------------------------------------------------------	-------------------------------------------------------------------------------------------------------------------------------------------------

Water comes out of the nozzle.

T-shaped connector	Check if the rubber packing is inserted into the T-shaped pipe and fix the nuts again.
Bidet hose connection	Make sure the bidet hose is fully inserted into the connection.
Filter	Inspect the filter for any damage.

Water drips after operation stops.

After cleansing	Water coming from between the nozzles after cleansing is for cleaning the nozzles. Therefore, it is not a malfunction.
After nozzle cleaning and toilet bowl sterilization	Water droplets from the nozzle may occur after nozzle cleaning or toilet sterilization. This is not a malfunction.

The appliance makes a sound.

Buzzing noise	After plugging in the power, a buzzing noise can be made from the main body. This is part of the nozzle position initialization process and not a malfunction.
Humming sound of boiling water	This is the sound of the heater operating as it rapidly heats the warm water when seated. It is not a malfunction.

Buttons do not function when pressed.

Seat sensor	It may not function properly when not seated due to the default setting of the seat sensor lock mode.
-------------	-------------------------------------------------------------------------------------------------------

Humming sound from the main body

Warm water heater	This sound occurs when the warm water heater is operating and does not indicate a malfunction in the appliance.
-------------------	-----------------------------------------------------------------------------------------------------------------

"Ding" sound every 5 seconds from the main body

Water supply error	<p>Check if the side indicator (or level 1 water pressure) on the control panel is blinking.</p> <p>[Troubleshooting]</p> <ol style="list-style-type: none"> 1. If the side indicator (or level 1 water pressure) is blinking, unplug the power cord to turn off the appliance and wait until all LED lights turn off. 2. Close the water supply valve. 3. Always open the water supply valve first before plugging in the power cord. 4. Check if the side indicator on the control panel blinks at 1-second intervals (or if the water pressure indicator displays in sequence). <ul style="list-style-type: none"> * This is part of the appliance initialization process and is not a malfunction. 5. If the side indicator stays on (or the water pressure indicator displays the pressure level) and no "Ding" sound is heard, then it is not a malfunction. 6. If the same issue persists after following these steps, please contact Coway Careline.
--------------------	------------------------------------------------------------------------------------------------------------------------------------------------------------------------------------------------------------------------------------------------------------------------------------------------------------------------------------------------------------------------------------------------------------------------------------------------------------------------------------------------------------------------------------------------------------------------------------------------------------------------------------------------------------------------------------------------------------------------------------------------------------------------------------------------------------------------------------------------------------------------------------------------------------------------------------------------------------------------------------------------------------------------------------------



- The ECO GREEN power-saving system utilizes hybrid instant warm water technology, which adjusts the water temperature to an optimal level when seated, reducing electricity consumption. When the ECO GREEN system is disabled, the appliance operates like a traditional storage-type system, maintaining the water tank at a constant temperature, with the power-saving function turned off.

Item		Electronic Bidet	
Product name		Coway Electronic Bidet	
Model		BAS45-AEMY	BAS45-ARMY
Rated voltage		220 V - 240 V~, 50 Hz	
Power consumption		1 550 W - 1 845 W	
Power plug		2 m	
Water supply pressure		0.1 Mpa - 0.7 Mpa (based on 2LPM)	
Product size		476 mm (W) × 533 mm (D) × 142 mm (H)	476 mm (W) × 501 mm (D) × 142 mm (H)
Product weight		6.8 kg	6.7 kg
Warm water cleansing device	Cleansing	Max 0.7 L/min, nozzle auto self-washing function	
	Bidet	Max 0.7 L/min, nozzle auto self-washing function	
	Rated time	About 2 minute for cleansing, about 2 minute for bidet	
	Water pressure adjustment	Mycom control, 5-level adjustment	
	Warm water temperature adjustment	4 levels (off: room temperature, weak: 30 - 42°C)	
	Maximum warm water power consumption	1 500 W	
	Safety device	Bimetal, Temperature sensor, Temperature fuse (Overheat prevention)	
Warm wind drying device	Warm wind temperature adjustment	4 levels	
	Rated time	Approx. 2 minutes for drying	
	Heater power consumption	180 W	
	Safety device	Bimetal, Temperature fuse (Overheat prevention), Relay	
Heated seat	Seat temperature adjustment (Temperature when seated)	4 steps (Off: room temperature, Low: 31 °C, Medium: 34 °C, High: 37 °C)	
	Heater power consumption	50 W	
	Safety device	Temperature sensor, Temperature fuse (Overheat prevention)	
Installation materials		1 bidet hose, 1 filter clip, 1 installation plate, 1 MF Filter, 1 filter fixing cap, 2 fixing washers, 2 fixing screws, 2 fixing nuts, 2 fixer slides, 1 installation adapter	
Other functions		Forward & Backward nozzle positioning, Nozzle cleaning, Electrolysis (nozzle, water path, toilet bowl), Toilet bowl LED, Child mode, Power-saving mode	
Operating temperature		0°C - 40°C	

- There may be slight changes to the specifications for improving the appliance's performance.
- The above warm water temperature may vary depending on the input power conditions.

Item		Electronic Bidet	
Product name		Coway Electronic Bidet	
Model		BAS46-AEMY	BAS46-ARMY
Rated voltage		220 V - 240 V~, 50 Hz	
Power consumption		1 550 W - 1 845 W	
Power plug		2 m	
Water supply pressure		0.1 Mpa - 0.7 Mpa (based on 2LPM)	
Product size		390 mm (W) × 533 mm (D) × 142 mm (H)	390 mm (W) × 501 mm (D) × 142 mm (H)
Product weight		6.4 kg	6.3 kg
Warm water cleansing device	Cleansing	Max 0.7 L/min, nozzle auto self-washing function	
	Bidet	Max 0.7 L/min, nozzle auto self-washing function	
	Rated time	About 2 minute for cleansing, about 2 minute for bidet	
	Water pressure adjustment	Mycom control, 5-level adjustment	
	Warm water temperature adjustment	4 levels (off: room temperature, weak: 30 - 42°C)	
	Maximum warm water power consumption	1 500 W	
	Safety device	Bimetal, Temperature sensor, Temperature fuse (Overheat prevention)	
Warm wind drying device	Warm wind temperature adjustment	4 levels	
	Rated time	Approx. 2 minutes for drying	
	Heater power consumption	180 W	
	Safety device	Bimetal, Temperature fuse (Overheat prevention), Relay	
Heated seat	Seat temperature adjustment (Temperature when seated)	4 steps (Off: room temperature, Low: 31 °C, Medium: 34 °C, High: 37 °C)	
	Heater power consumption	50 W	
	Safety device	Temperature sensor, Temperature fuse (Overheat prevention)	
Installation materials		1 bidet hose, 1 filter clip, 1 installation plate, 1 MF Filter, 1 filter fixing cap, 2 fixing washers, 2 fixing screws, 2 fixing nuts, 2 fixer slides, 1 installation adapter, 3 AAA batteries, 1 wall-mounted remote control holder, 1 remote control double-sided tape	
Other functions		Forward & Backward nozzle positioning, Nozzle cleaning, Electrolysis (nozzle, water path, toilet bowl), Toilet bowl LED, Child mode, Power-saving mode	
Operating temperature		0°C - 40°C	
Remote control	Brand name	Juwon Co.Ltd	
	Manufacturer/Country	Juwon Co.Ltd / Korea	
	Equipment Name / Model	Specific low-power wireless device (wireless data communication system device) BAS46-AEMY/ARMY	

- There may be slight changes to the specifications for improving the appliance's performance.
- The above warm water temperature may vary depending on the input power conditions.

- Please refer to your Sales Order Form for our basic policy for the product warranty. For more detailed terms of the product warranty, please visit our website. Please note that the terms of our product warranty are subject to change from time to time in compliance with the relevant Malaysian laws and regulations.
- <https://www.coway.com.my/warranty-policy>

MALAYSIA

Add : Coway (Malaysia) Sdn. Bhd.
Level 20, Ilham Tower, No. 8, Jalan Binjai, 50450
Kuala Lumpur.
Careline : 1-800-888-111

001

1239347

coway

www.coway.com.my